



# INEA

Innovation and Networks Executive Agency

**PV prosumers on the rise**

21 November 2019



**Michaela GIGLI**

Project Officer

Dep. H2020 - Unit H1. Energy

- Call text: Social Sciences and Humanities Support for the Energy Union (ID: LCE-31-2016-2017)

In 2016:

- Factors driving **individual energy choices** and energy-related behaviour (such as values and ethics, structures of everyday practices, belief systems or social or cultural, notably gender, roles), employing different data-gathering techniques;
- Factors driving **collective energy choices** and energy-related behaviour (such as social, economic, or other forms of organization or experiences with social mobilization).

In 2017:

- Socioeconomic **incentive structures** that encourage or discourage energy-responsible behaviour;
- **Political, institutional, and organizational frameworks** that condition and structure citizen participation, including questions of inclusiveness, gender, democracy, organizational formats and business models.

# Prosumer-related H2020 SSH projects in the Energy WP managed by INEA

2016

2017

2018

LCE-31-2016

**Individual & collective energy  
choices and behaviour**

EU funding: 10 MEUR

ECHOES  
ENABLE.EU  
ENERGISE

LCE-31-2017

**Socio-economic incentive structures  
& Conditions for citizen participation**

EU funding: 10 MEUR

SMARTEES  
PROSEU

LC-SC3-CC1-2018

**Social Innovation in energy sector**

EU funding: 10 MEUR

SONNET  
COMETS  
NEWCOMERS  
SocialRES





PROSEU

PROSEU PROJECT

# PROSUMERS FOR THE ENERGY UNION

Mainstreaming  
active participation of citizens  
in the Energy Transition

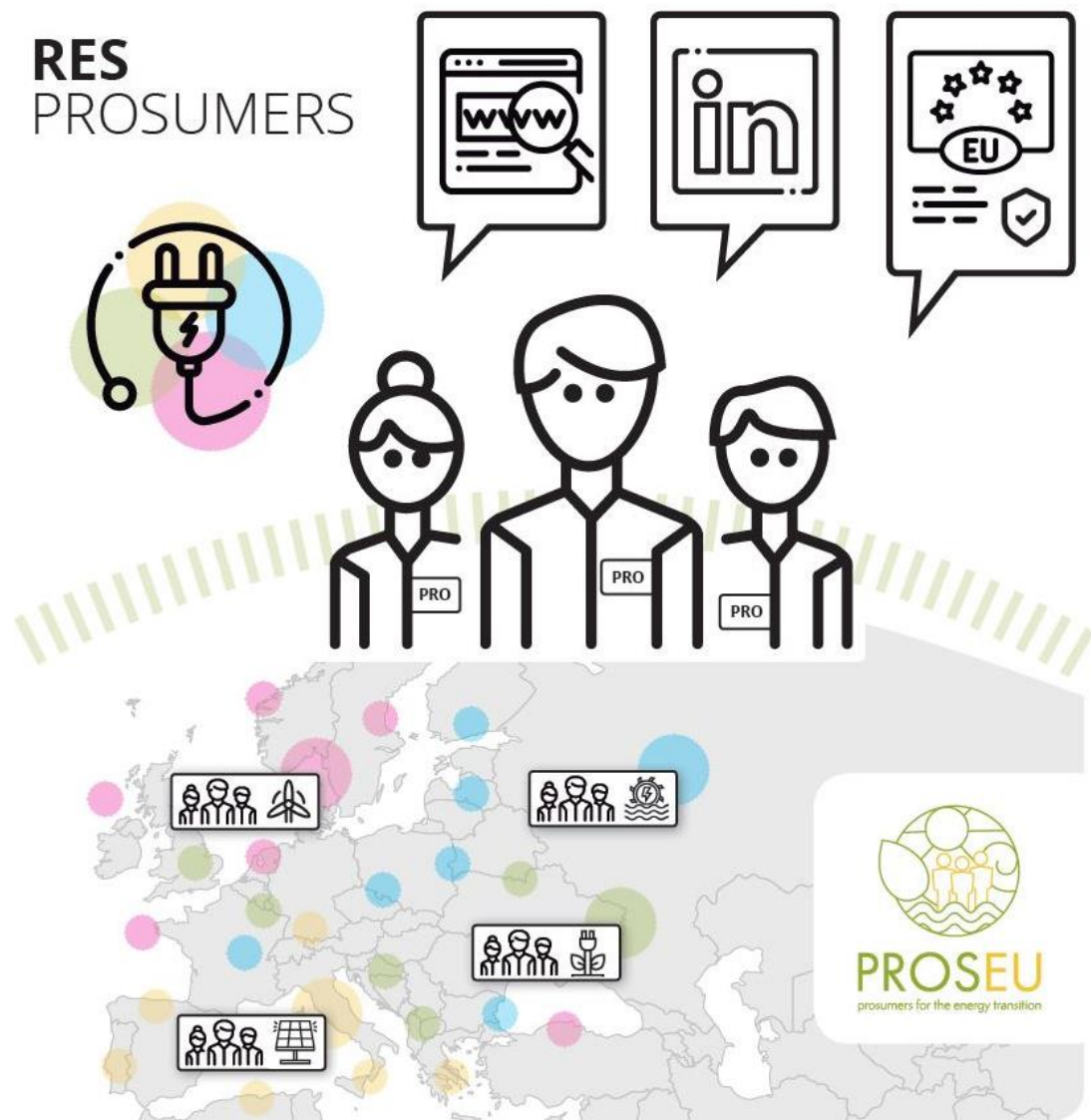


<https://proseu.eu/>

Project coordinator: Inês Campos, [info@proseu.eu](mailto:info@proseu.eu)

# PROSEU

RES  
PROSUMERS



**Report** on the  
identification,  
characterization and  
creation of typologies of  
the variety of RES  
prosumer initiatives and  
stakeholders in Europe

\*

**Assessment report** of  
existing EU-wide and  
Member State-specific  
regulatory and policy  
frameworks of RE  
prosumers

# PROSEU

RES  
PROSUMERS



**Recommendations** to  
policymakers at EU,  
national, and local level on  
how to support and  
mainstream renewable  
energy prosumerism

\*

**Guidance** to prosumer  
initiatives on how to make  
the best use of the  
different frameworks





European  
Commission



To hear about concrete proposals and examples for policy makers and political decision makers to apply the principles for prosumer policies that would allow prosumers and energy communities to become an integral part of the energy system, join our Webinar on Tuesday, 3 December 2019 at 10h30.

## ENABLE.EU Project -

<http://www.enable-eu.com/>

The ENABLE.EU project focuses on citizens-oriented energy transition to a low-carbon EU energy system. It aims to define key determinants of individual and collective energy choices in three key consumption areas - transportation, heating & cooling, and electricity – and in the shift to prosumption (users-led initiatives of decentralised energy production and trade).



### D 4.3 Synthesis Report on the case study “From Consumer to Prosumer”

<b>Deliverable:</b>	Synthesis Report on the case study “From Consumer to Prosumer”
<b>Author(s):</b>	Karina Standal, Hege Westskog and Imre van Kraalingen (CICERO), Lorian Paolucci (ISINNOVA), Marija Reljic (EI), Marta Talevi (LSE) and Andrii Chubyk (CGS21)
<b>Version:</b>	Final
<b>Quality review:</b>	Emilie Magdalinski (JDI), Stefano Proietti (ISINNOVA)
<b>Date:</b>	28/09/2018



## ECHOES Project - <https://echoes-project.eu/>



One of the objectives: in-depth analysis of the paradigm shift from energy consumers to prosumers, and the respective role of cultures, markets, and policy,

- Assess impact of “enabling factors” for collective energy practices, i.e. the framework or scope of action that is required to initialize and to support sustainable collective energy choices among energy consumers and prosumers
- multinational studies on the national “energy memories” analyzing to what extent energy memories relate to the energy consumption/prosumer behavior
- National assessment: factors enabling collective energy consumer / prosumer action
- Creation of a SSH database and indicators inc. Compilation of national energy and emission taxes and supports (incl. consumer and prosumer supports), consumer and prosumer energy prices

# Prosumer-related H2020 SSH projects in the Energy WP managed by INEA

2016

2017

2018

LCE-31-2016

**Individual & collective energy  
choices and behaviour**

EU funding: 10 MEUR

ECHOES  
ENABLE.EU  
ENERGISE

LCE-31-2017

**Socio-economic incentive structures  
& Conditions for citizen participation**

EU funding: 10 MEUR

SMARTEES  
PROSEU

LC-SC3-CC1-2018

**Social Innovation in energy sector**

EU funding: 10 MEUR

SONNET  
COMETS  
NEWCOMERS  
SocialRES



# SOCIALRES

## Fostering socially innovative and inclusive strategies for empowering citizens in the renewable market of the future

H2020 Contractors' Workshop on Social Sciences and Humanities  
Brussels, Belgium, 27 September 2019

---

Pablo Alonso and Silvia Caneva, WIP - Renewable Energies



This project has received funding from the European Union's Horizon 2020 research and innovation programme under grant agreement No 837758.



# Objective

- Aim of the SocialRES project is to close the non-technological research gaps that impede the widespread uptake of **social innovation** business models and services in the European energy sector

## Definition of social innovations

*“Social innovations are defined “as new ideas (products, services and models) that simultaneously meet social needs (more effectively than alternatives) and create new social relationships or collaborations. In other words, they are innovations that are not only good for society but also enhance society’s capacity to act”.*

Source: Empowering people, driving change, Bureau of European Advisers (BEPA), Brussels (2011)

- SocialRES identifies the business models and services implemented by **Cooperatives**, **Crowd-funders** and **Aggregators**, operating in the **Renewable Energy sector**, as the social innovations to be investigated.

# Consortium



RENEWABLE ENERGY  
COOPERATIVES



AGGREGATORS



CROWDFUNDING PLATFORMS



# Together we make energy

SocialRES aims to close non-technological research gaps that impede the widespread uptake of social innovation business and service models in the European energy sector.

SocialRES fosters energy democracy by creating a better understanding of socio-economic, cultural, political and gender factors, and provides a comprehensive evidence base for policy makers in order to ease the transition to a cleaner energy system.

CONTACT US



This project has received funding from the European Union's Horizon 2020 research and Innovation programme under grant agreement N°837758.

Website: [socialres.eu](https://socialres.eu)  
Twitter: @SocialRESeu





**Collective action Models for Energy Transition and Social Innovation**

<http://www.comets-project.eu>

### **Main Topic and Questions**

**Investigate collective action initiatives (CAIs) as the main driver of social innovation in the energy sector**

What are the mechanisms that promote the creation or uptake of CAIs in the energy sector and what are the barriers?

What is the actual and potential contribution of SI in the energy sector provided by various types of CAIs in qualitative and quantitative terms?



The project COMETS has received funding from the European Union's Horizon 2020 research and innovation programme under grant agreement No. 837722

# Two specific objectives

## Building robust knowledge on social innovative processes in the energy transition by CAIs

to understand what socio-economic, political, technological and cultural factors can facilitate CAIs as an engine of the energy transition

- **What** are, and what have been in the past, the social innovations in the energy field in terms of processes and products?
- **Who** participates in a CAI and why?
- **In which way** are CAIs socially innovative?
- **How** to distinguish between 'successful' and 'unsuccessful' CAIs in the energy field?

## Designing new tools for CAIs assessments, estimation *and maximization* of their contribution potential

to provide tools for supporting SI processes over to two-time horizons

- *short-to-medium time*: support to CAIs and local decision makers through their involvement in the COMETS research activities.
- *medium-to-long time* (i.e. beyond the COMETS duration) the main outputs will be exploited  
Supporting Platform for CAIs, knowledge base, roadmaps, networks of CAIs



<https://www.newcomersh2020.eu/>

# THE NEWCOMERS PROJECT – EXPLORING NEW ENERGY COMMUNITIES

27 September 2019  
INEA SSH cluster event



**newcomers**  
EXPLORING NEW ENERGY COMMUNITIES





## Aims

- **Understand** (the emergence and operation of) **new clean energy community business models** and their potential for the energy transition
- **Give recommendations on how to create a favorable environment** for new clean energy communities
- **Enable EU citizens** to get informed and **to join energy communities**
- **Stimulate learning processes** between stakeholders

## Expected impact

- **Improved knowledge of the most promising** and scalable clean energy **community business models**
- **Increased awareness of the needs** of new clean energy communities
- **Stimulated changes in the regulatory environment** for self-sustained, revenue-generating clean energy community business models
- **Increased share of citizens** joining new clean energy communities

---

# SONNET: SOCIAL INNOVATION IN ENERGY TRANSITIONS

**Dr Karoline S. Rogge**

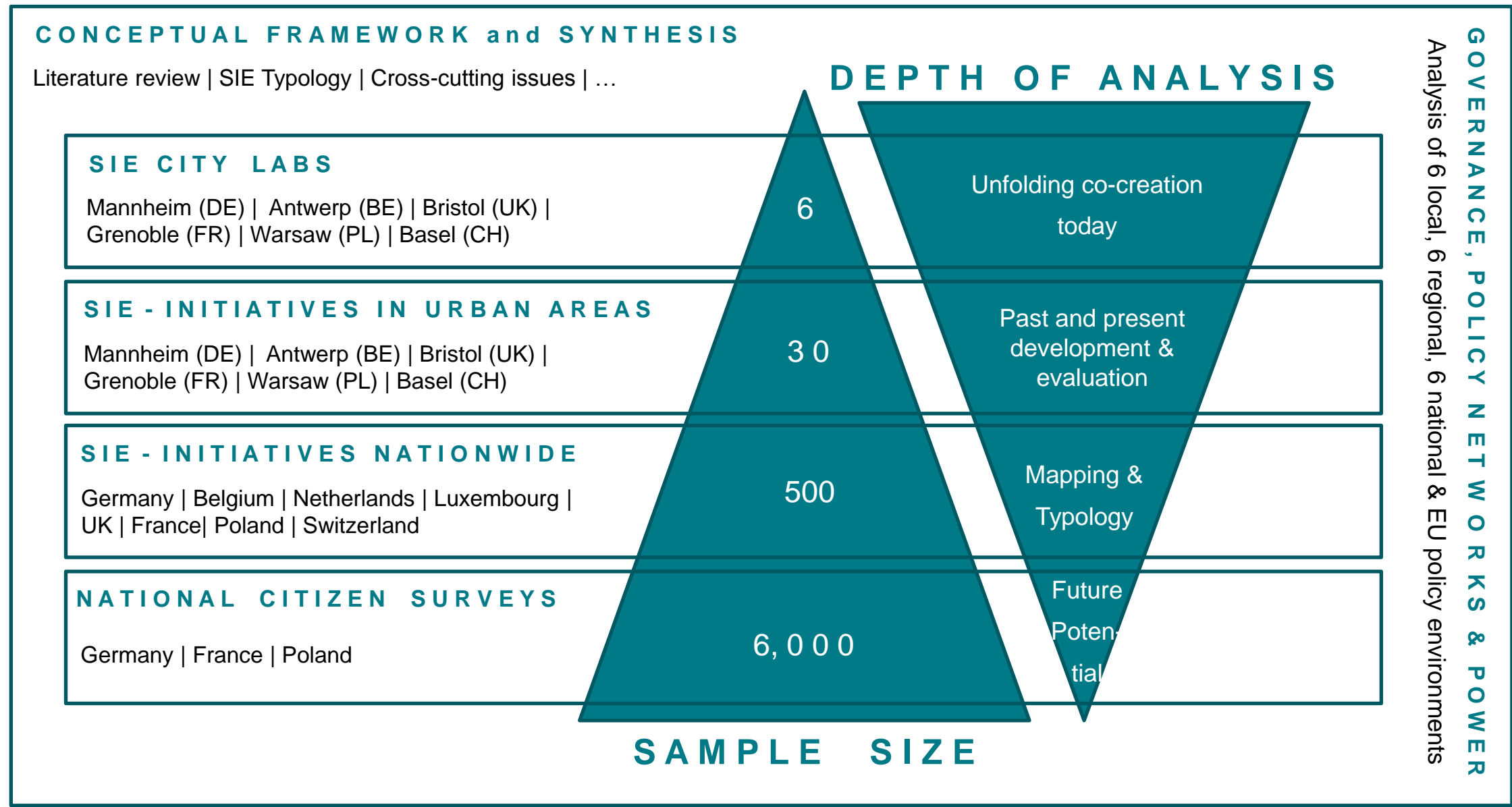
*Deputy Head Competence Center Policy and Society, Fraunhofer ISI, Germany*

*Professor of Sustainability Innovation and Policy, SPRU, University of Sussex, UK*

---



# Initial results of SONNET’s multi-method research (start 6/19)





# Thank you!

**Contact:**

**[Michaela.GIGLI@ec.europa.eu](mailto:Michaela.GIGLI@ec.europa.eu)**

**Visit INEA's website:**

**<http://inea.ec.europa.eu/>**



**INEA on Twitter:**

**[@inea\\_eu](https://twitter.com/inea_eu)**

**Follow [#H2020Energy](https://twitter.com/inea_eu)**



**INEA on LinkedIn:**

**Look for [Innovation and](#)**

**[Networks](#) [Executive Agency](#)**